



# Spare Parts List

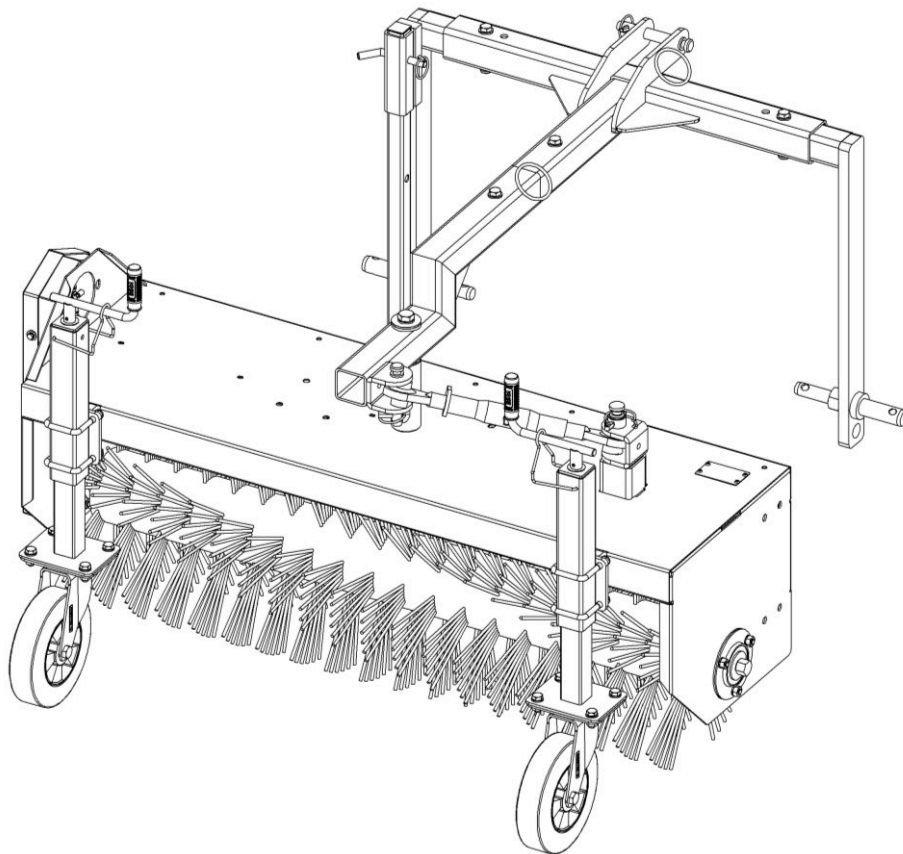
## Sweeper

roller diameter 40cm rear attachment

**HKM 12540 H / M**125cm working width

**HKM 15040 H / M**150cm working width

**FKM 15040 H**150cm working width



Order number: E00134

Machine No.: 71857

Rev.: R02

Status: 04.2024

**Kersten**  
SITE MAINTENANCE EQUIPMENT

Telephone: 0118 9869 253

Email: [office@kerstenuk.com](mailto:office@kerstenuk.com)

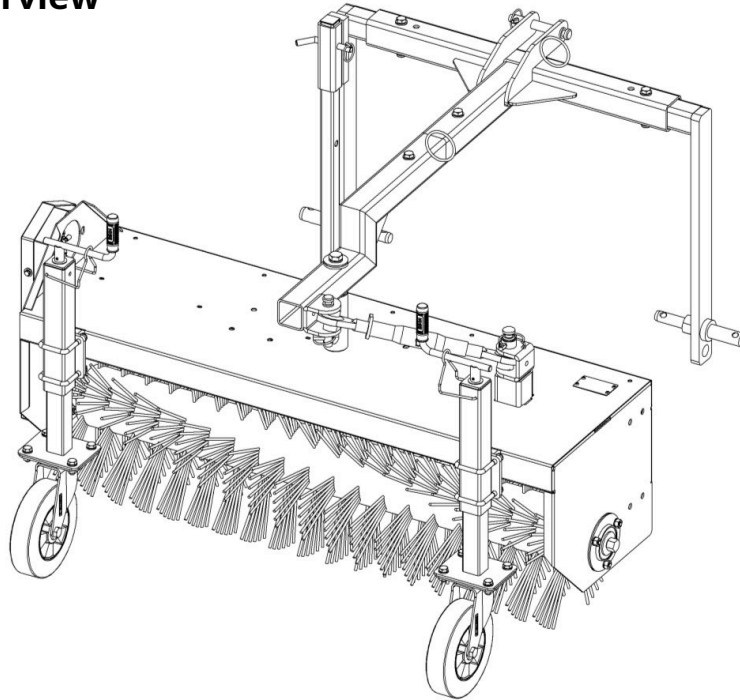
Progress House, 39 Boulton Road, Reading, Berkshire, RG2 0NH, United Kingdom

<https://kerstenuk.com/>

## Table of contents

<b>1</b>	<b>Model overview</b>	<b>3</b>
1.1	HKM 12540 H – 125cm working width – C02141	3
1.2	HKM 15040 H – 150cm working width – C02142	3
1.3	HKM 12540 M – 125cm working width – C02143	3
1.4	HKM 15040 M – 150cm working width – C02144	3
1.5	FKM 15040 H – 150cm working width – S1414	3
<b>2</b>	<b>Basic machine</b>	<b>4</b>
2.1	Basic device – HKM – roller diameter 40cm	4
2.1.1	Basic device HKM 12540 – C11358	5
2.1.2	Basic device HKM 15040 – C11403	6
2.2	Cardan shaft drive	7
2.2.1	Cardan shaft drive for HKM 12540 M - C02080	8
2.2.2	Cardan shaft drive for HKM 15040 M - C02137	9
2.3	Hydraulic drive - C02090	10
<b>3</b>	<b>Sweeper FKM 15040 H – S1414</b>	<b>11</b>
<b>4</b>	<b>Accessories</b>	<b>13</b>
4.1	Hydraulic swivel device - HSZ-180 – C11362	13
4.2	Quantity control valve for hydraulic drive - MP-MR-ST - C02084	14
4.3	Dirt collection container	16
4.3.1	Dirt collection container - SSB 12540 - C02145	17
4.3.2	Dirt collection container - SSB 15040 - C02146	17
4.4	Splash guard cover	18
4.4.1	Splash guard cover – SPA 125 - C03300	19
4.4.2	Splash guard cover – SPA 150 - C03301	19
4.5	Mechanical dirt container emptying - C02115	20
4.6	Hydraulic dirt container emptying - HB-SSB-HFKM - C02088	21
4.7	Side brush - ASH 5040 H - C02165	22
<b>5</b>	<b>Sweeping rollers 40 cm roller diameter</b>	<b>24</b>

## 1 model overview



### 1.1 HKM 12540 H - 125cm working width - C02141

module	designation
C11358	basic device HKM 12540
C02090	hydraulic drive

### 1.2 HKM 15040 H - 150cm working width - C02142

module	designation
C11403	basic device HKM 15040
C02090	hydraulic drive

### 1.3 HKM 12540 M - 125cm working width - C02143

module	designation
C11358	basic device HKM 12540
C02080	cardan shaft drive

### 1.4 HKM 15040 M - 150cm working width - C02144

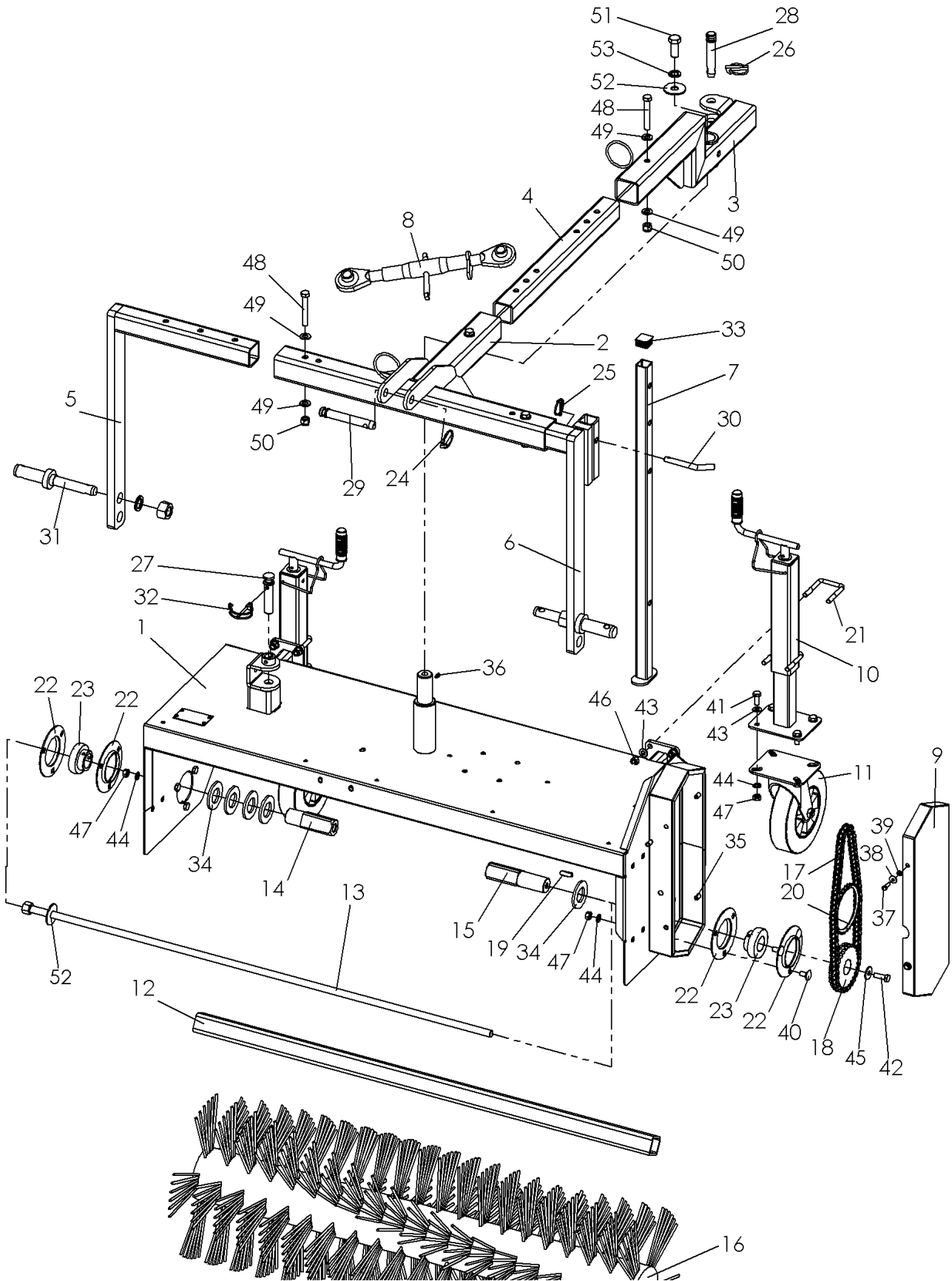
module	designation
C11403	basic device HKM 15040
C02137	cardan shaft drive

### 1.5 FKM 15040 H - 150cm working width - S1414

module	designation
S1414	sweeper

## 2 basic machine

### 2.1 Basic device - HKM - roller diameter 40cm



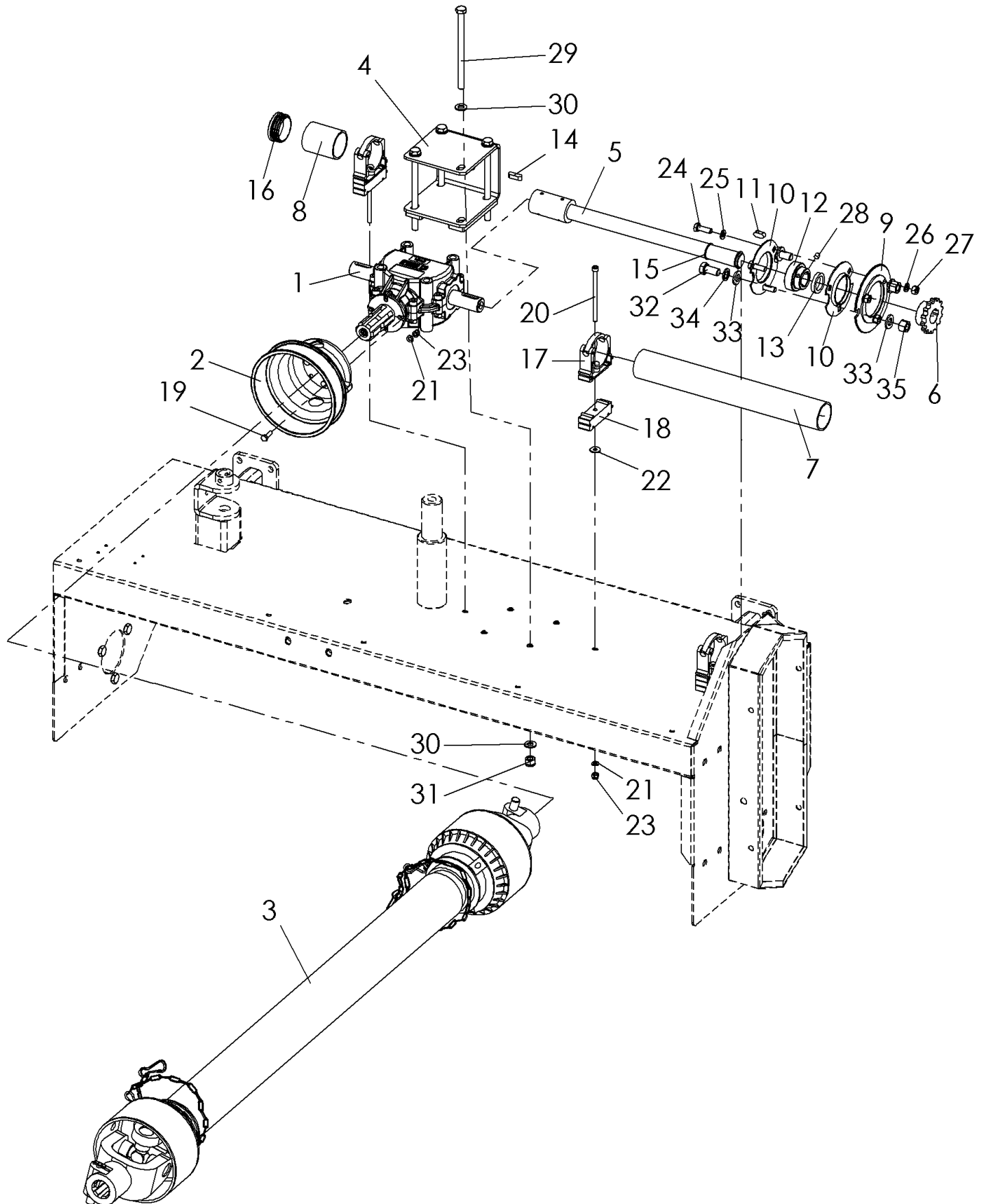
### 2.1.1 Basic device HKM 12540 - C11358

No.	Art.-No.	No.	Designation 1
1	C11333	1	Basic housing complete
2	C11543	1	ABR tractor side complete
3	C11544	1	ABR machine side complete
4	C11547	1	adjustable tube
5	C11350	1	side arm complete left
6	C11351	1	side arm support complete right
7	100 000 021	1	parking support complete
8	950 200 100	1	top link
9	130 000 165	1	chain case cover
10	942 003 020	2	support leg
11	926 304 200	2	roller
12	125,000,004	1	drive tube
13	125,000,006	1	tension rod
14	130 000 351	1	drive stub right
15	130,000,346	1	drive stub left
16	see chapter Sweeper roller	1	combination sweeper roller
17	920 100 950	1	Chain for sweeper, Roll Ring
18	C03840	1	sprocket complete
19	908 010 830	1	feather key
20	920 108 035	1	roll-ring chain tensioner
21	901 510 250	4	U-bolt
22	924 200 207	4	sheet metal bearing shell
23	924 100 207	2	ball bearings
24	907,108,000	1	linch pin
25	907,145,000	1	linch pin
26	907,111,000	1	linch pin
27	750,000,028	1	locking pin secured at the top
28	907 400 073	1	socket pin
29	907 400 074	1	socket pin
30	155 000 013	1	socket pin
31	907 600 014	2	lower link step bolt
32	907 190 550	1	pipe linchpin
33	943 130 303	1	protective cap
34	705 631 305	5	disc
35	900 006 006	4	retractable sleeve with countersunk head
36	910,006,000	1	grease nipple
37	901 006 020	4	hexagon screw without shaft
38	905 206 018	4	K-disk
39	905,006,000	4	spring ring
40	901 910 020	3	carriage bolt
41	901 010 025	8	hexagon screw without shaft
42	901 010 030	1	hexagon screw without shaft
43	905,110,000	16	U-disk
44	905,010,000	14	spring ring
45	905,210,000	1	K-disk
46	900 010 002	8	lock nut
47	900 010 001	14	Skt.-Mutter
48	901 012 080	4	hexagon screw without shaft
49	905,112,000	8	U-disk
50	900 012 002	4	lock nut
51	901 016 040	1	hexagon screw without shaft
52	905,216,000	2	K-disk
53	905,016,000	1	spring ring

### 2.1.2 Basic device HKM 15040 - C11403

No.	Art.-No.	No.	Designation 1
1	C11347	1	Basic housing complete
2	C11543	1	ABR tractor side complete
3	C11544	1	ABR machine side complete
4	C11547	1	adjustable tube
5	C11350	1	side arm complete left
6	C11351	1	side arm support complete right
7	100 000 021	1	parking support complete
8	950 200 100	1	top link
9	130 000 165	1	chain case cover
10	942 003 020	2	support leg
11	926 304 200	2	roller
12	150 000 360	1	drive tube
13	150 000 355	1	tension rod
14	130 000 351	1	drive stub right
15	130,000,346	1	drive stub left
16	see chapter Sweeper roller	1	combination sweeper roller
17	920 100 950	1	Chain for sweeper, Roll Ring
18	C03840	1	sprocket complete
19	908 010 830	1	feather key
20	920 108 035	1	roll-ring chain tensioner
21	901 510 250	4	U-bolt
22	924 200 207	4	sheet metal bearing shell
23	924 100 207	2	ball bearings
24	907,108,000	1	linch pin
25	907,145,000	1	linch pin
26	907,111,000	1	linch pin
27	750,000,028	1	locking pin secured at the top
28	907 400 073	1	socket pin
29	907 400 074	1	socket pin
30	155 000 013	1	socket pin
31	907 600 014	2	lower link step bolt
32	907 190 550	1	pipe linchpin
33	943 130 303	1	protective cap
34	705 631 305	5	disc
35	900 006 006	4	retractable sleeve with countersunk head
36	910,006,000	1	grease nipple
37	901 006 020	4	hexagon screw without shaft
38	905 206 018	4	K-disk
39	905,006,000	4	spring ring
40	901 910 020	3	carriage bolt
41	901 010 025	8	hexagon screw without shaft
42	901 010 030	1	hexagon screw without shaft
43	905,110,000	16	U-disk
44	905,010,000	14	spring ring
45	905,210,000	1	K-disk
46	900 010 002	8	lock nut
47	900 010 001	14	Skt.-Mutter
48	901 012 080	4	hexagon screw without shaft
49	905,112,000	8	U-disk
50	900 012 002	4	lock nut
51	901 016 040	1	hexagon screw without shaft
52	905,216,000	2	K-disk
53	905,016,000	1	spring ring

2.2 Cardan shaft drive



## 2.2.1 Cardan shaft drive for HKM 12540 M - C02080

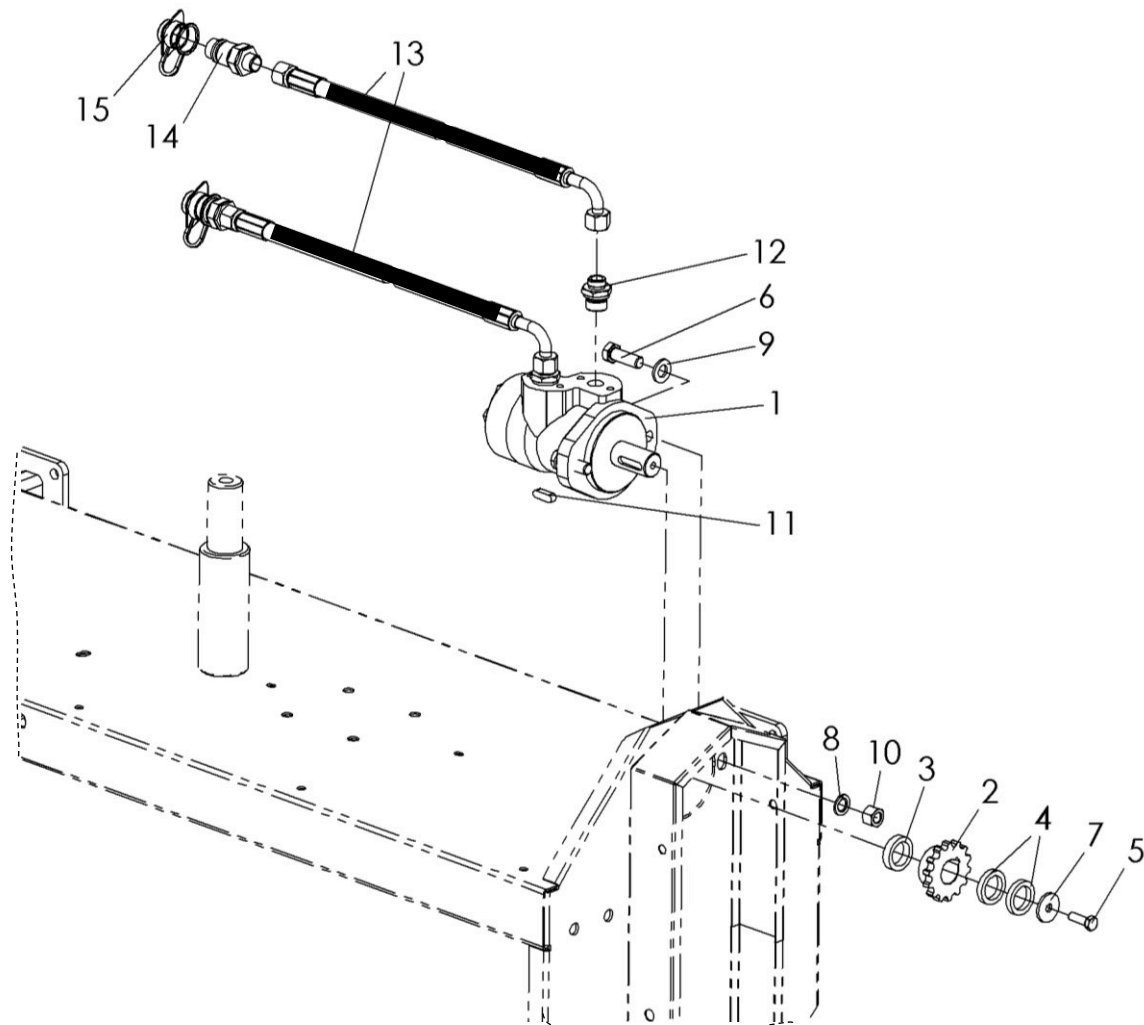
No.	Art.-No.	No.	Designation 1
1	922 101 001	1	bevel gear
2	923 003 001	1	protective cap for cardan shaft
3	923 000 101	1	cardan shaft
4	150 000 016	1	Gearbox mount, complete
5	125,000,010	1	Drive shaft, complete
6	920 401 214	1	sprocket
7	125 000 011	1	protective tube
8	C07465	1	cardan shaft protection
9	050 438 150	1	adapter flange
10	C01048	2	bearing shell
11	908 008 720	1	feather key
12	924 100 205	1	camp
13	705 025 356	1	spacer
14	908 008 725	1	feather key
15	905,925,000	1	retaining ring outside
16	943 000 050	1	protective cap black
17	908 604 001	3	pipe clamp
18	908 604 002	3	filling block pipe clamp
19	901 006 016	4	hexagon screw without shaft
20	901 806 100	3	Cylinder head screw with hexagon socket
21	905,106,000	7	U-disk
22	905 206 018	3	K-disk
23	900 006 002	7	lock nut
24	901 008 025	3	hexagon screw without shaft
25	905,108,000	3	U-disk
26	905 008 000	3	spring ring
27	900 008 001	3	Skt.-Mutter
28	902 308 010	1	threaded pin with tip
29	901 110 150	4	hexagon screw with shaft
30	905,110,000	8	U-disk
31	900 010 002	4	lock nut
32	901 012 025	2	hexagon screw without shaft
33	905,112,000	4	U-disk
34	905,012,000	2	spring ring
35	900 012 001	2	Skt.-Mutter



## 2.2.2 Cardan shaft drive for HKM 15040 M - C02137

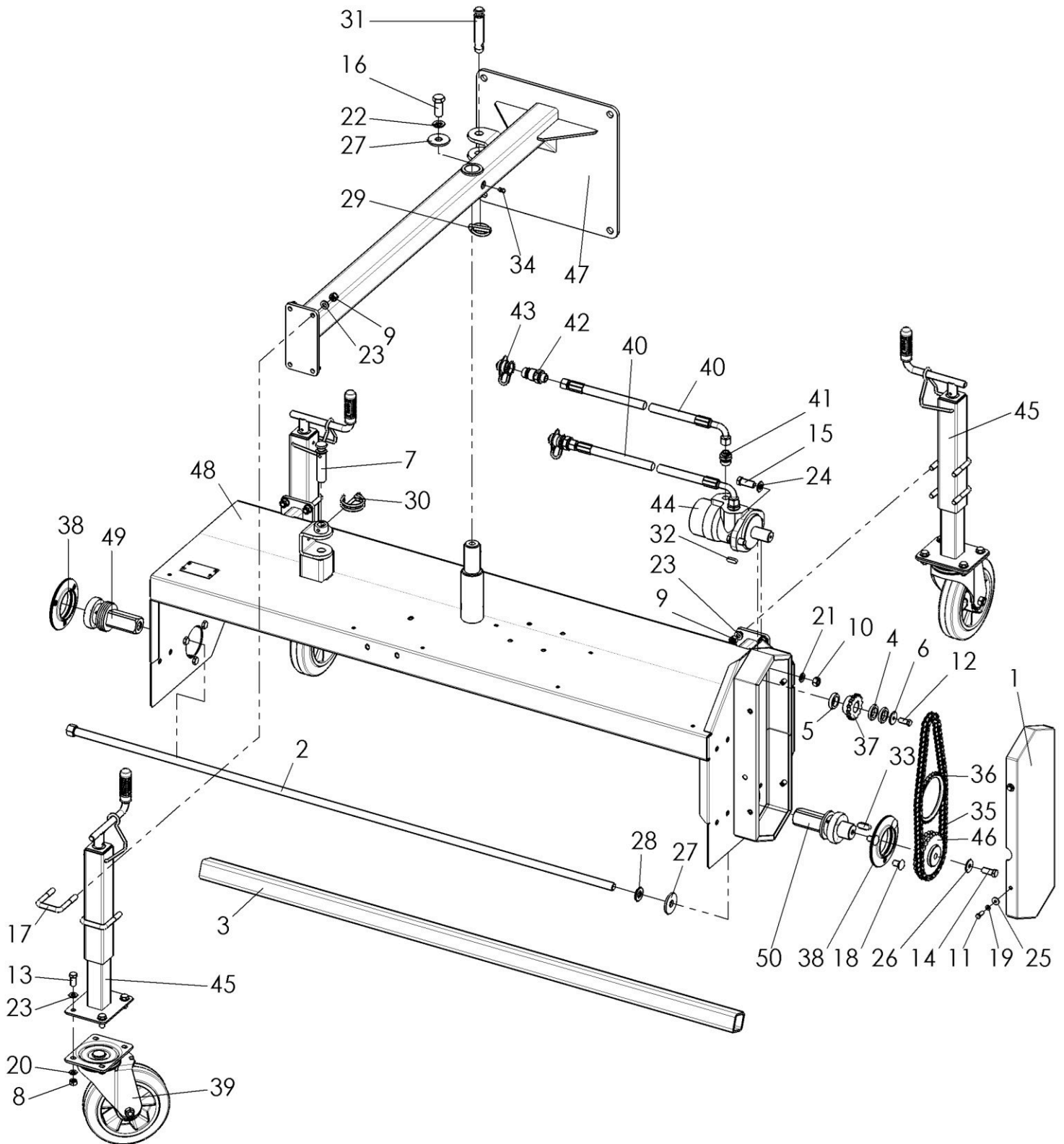
No.	Art.-No.	No.	Designation 1
1	922 101 001	1	bevel gear
2	923 003 001	1	protective cap for cardan shaft
3	upon request	1	cardan shaft with protection
4	150 000 016	1	Gearbox mount, complete
5	150 000 011	1	Drive shaft, complete
6	920 401 214	1	sprocket Z14
7	150 000 034	1	protective tube
8	C07465	1	cardan shaft protection
9	050 438 150	1	adapter flange
10	C01048	2	bearing shell
11	908 008 720	1	feather key
12	924 100 205	1	camp
13	705 025 356	1	spacer
14	908 008 725	1	feather key
15	905,925,000	1	retaining ring outside
16	931 000 031	1	oil filler plug
17	943 000 050	1	protective cap black
18	908 604 001	3	pipe clamp
19	908 604 002	3	filling block pipe clamp
20	901 006 016	4	hexagon screw without shaft
21	901 806 100	3	Cylinder head screw with hexagon socket
22	905,106,000	7	U-disk
23	905 206 018	3	K-disk
24	900 006 002	7	lock nut
25	902 308 010	1	threaded pin with tip
26	901 110 150	4	hexagon screw with shaft
27	905,110,000	8	U-disk
28	900 010 002	4	lock nut
29	901 012 025	2	hexagon screw without shaft
30	905,112,000	4	U-disk
31	905,012,000	2	spring ring
32	900 012 001	2	Skt.-Mutter
33	901 908 020	3	carriage bolt
34	905 008 000	3	spring ring
35	900 008 001	3	Skt.-Mutter

2.3 Hydraulic drive - C02090



No.	Art.-No.	No.	designation
1	935 102 050	1	hydraulic motor
2	920 401 214	1	sprocket Z14
3	705 025 358	1	spacer
4	705 025 356	2	spacer
5	901 008 025	1	hexagon screw without shaft
6	901 012 035	2	hexagon screw without shaft
7	705 300 803	1	disc
8	905,012,000	2	spring ring
9	905,112,000	2	U-disk
10	900 012 001	2	Skt.-Mutter
11	908 008 725	1	feather key
12	931 071 212	2	hydraulic screw connection
13		2	hydraulic hose
14	upon request	2	hydraulic connector
15		2	dust cap

### 3 sweeper FKM 15040 H - S1414

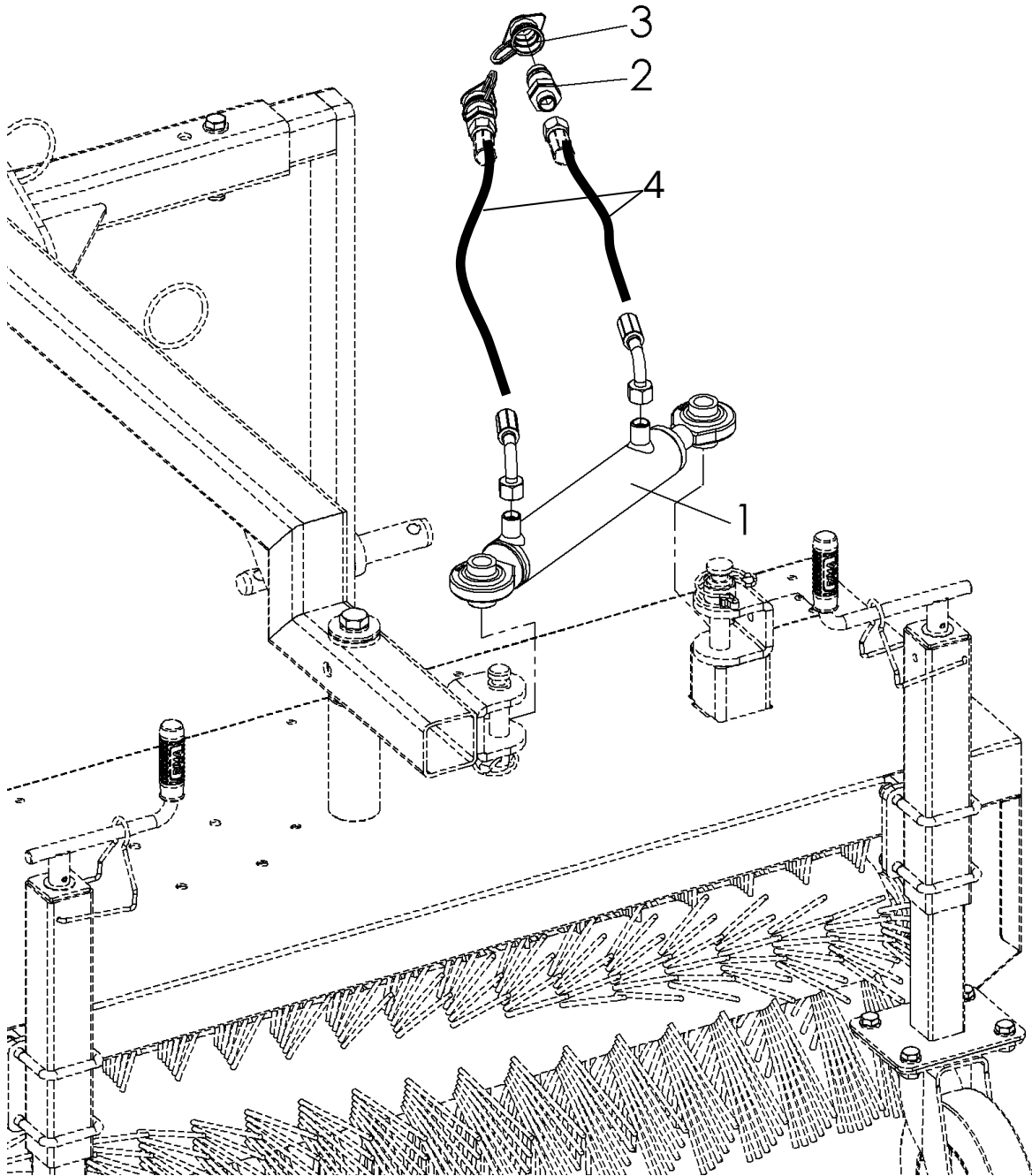


## sweeper FKM 15040 H - S1414

No.	Art.-No.	No.	designation
1	130 000 165	1	chain case cover
2	150 000 355	1	tension rod complete
3	150 000 360	1	drive tube
4	705 025 356	2	spacer
5	705 025 358	1	spacer
6	705 300 803	1	disc
7	750,000,028	1	locking pin secured at the top
8	900 010 001	18	Skt.-Mutter
9	900 010 002	12	lock nut
10	900 012 001	2	Skt.-Mutter
11	901 006 020	4	hexagon screw without shaft
12	901 008 025	1	hexagon screw without shaft
13	901 010 025	12	hexagon screw without shaft
14	901 010 030	1	hexagon screw without shaft
15	901 012 035	2	hexagon screw without shaft
16	901 016 040	1	hexagon screw without shaft
17	901 510 250	6	U-bolt
18	901 910 020	3	carriage bolt
19	905,006,000	4	spring ring
20	905,010,000	18	spring ring
21	905,012,000	2	spring ring
22	905,016,000	1	spring ring
23	905,110,000	24	U-disk
24	905,112,000	2	U-disk
25	905 206 018	4	K-disk
26	905,210,000	1	K-disk
27	905,216,000	2	K-disk
28	905,516,000	1	locking washer
29	907,111,000	1	linch pin
30	907,155,000	1	pipe linchpin
31	907 400 073	1	upper link pin
32	908 008 725	1	feather key
33	908 010 830	1	feather key
34	910,006,000	2	grease nipple
35	920 100 950	1	Chain for sweeper, Roll Ring
36	920 108 035	1	roll-ring chain tensioner
37	920 401 214	1	sprocket Z14
38	924 200 207	2	bearing shell set
39	926 304 200	3	roller Ø200
39	926 304 200	3	roller Ø200
40	930 000 025	2	hydraulic hose
41	931 071 212	2	hydraulic screw connection
42	932 131 323	2	hydraulic connector BG3
43	932 391 032	2	dust cap
44	935 102 050	1	hydraulic motor
45	942 003 020	3	support leg
46	C03840	1	sprocket
47	C05910	1	mounting frame, complete
48	C11347	1	Basic housing complete
49	M00128	1	drive stub right; pre-assembled assembly
50	M00129	1	drive stub left

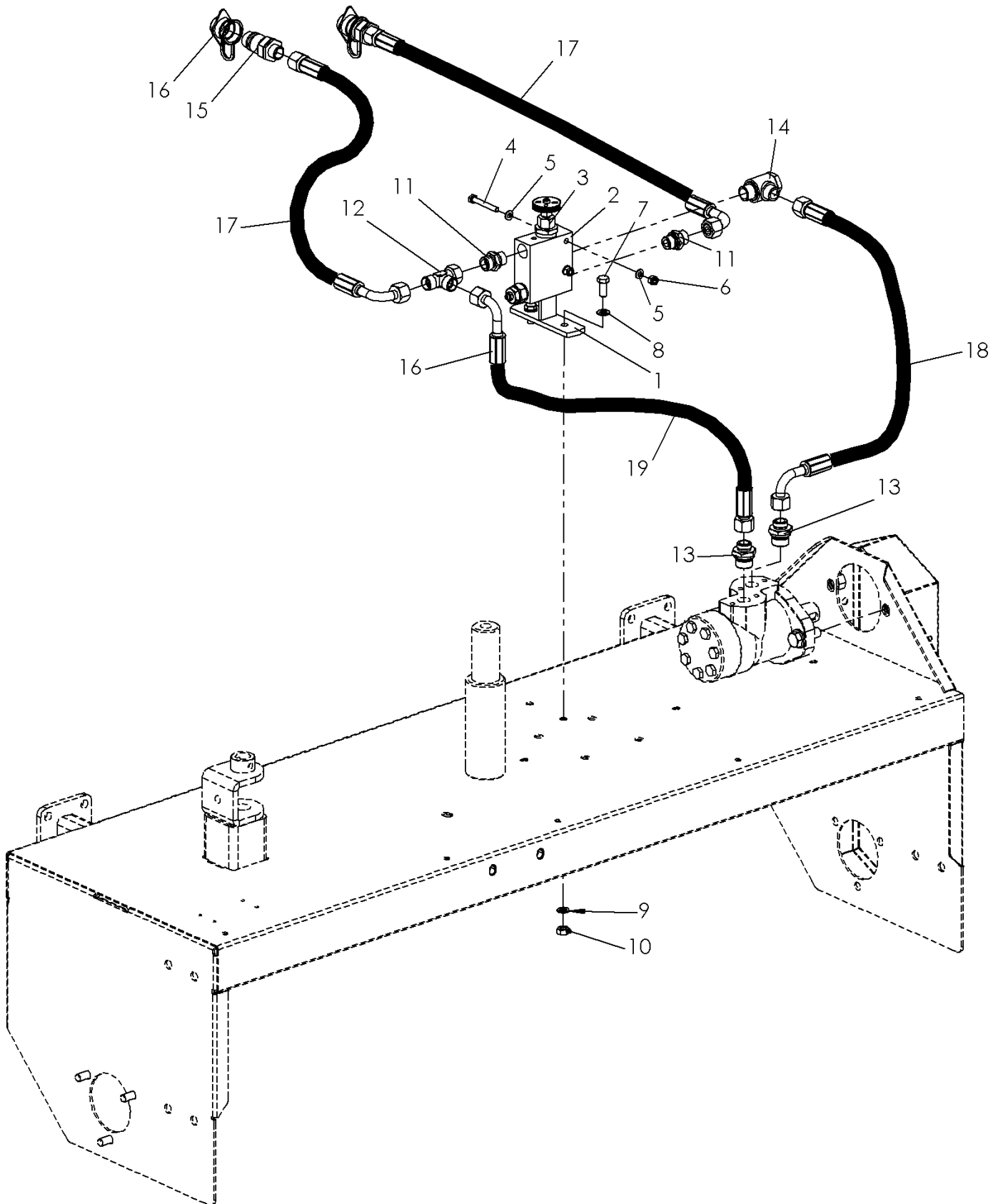
4 accessories

4.1 Hydraulic swivel device - HSZ-180 - C11362



No.	Art.-No.	No.	designation
1	933 100 100	1	hydraulic cylinders
2	upon request	2	hydraulic connector
3		2	dust cap
4		2	hydraulic hose

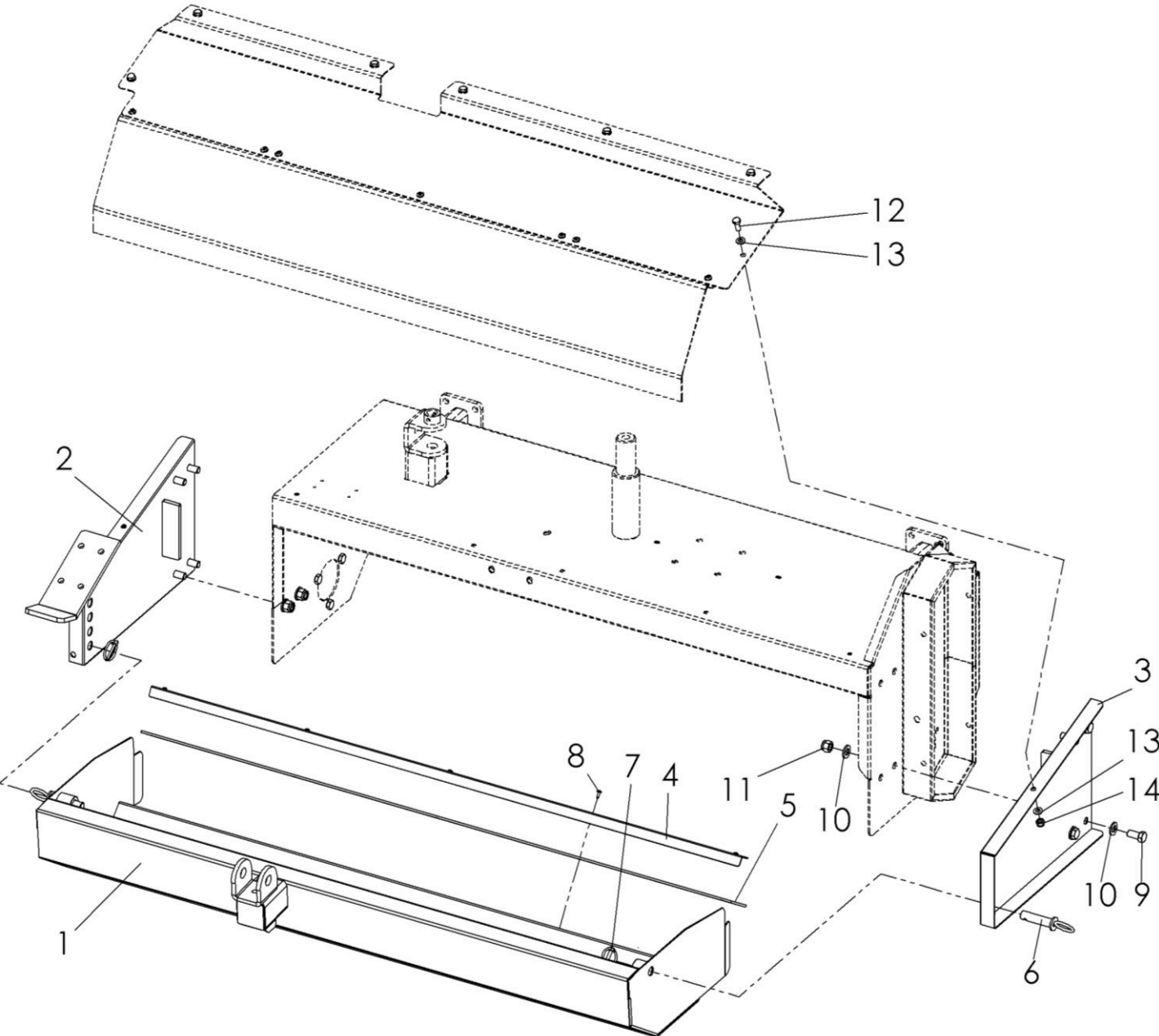
4.2 Flow control valve for hydraulic drive - MP-MR-ST - C02084



**Flow control valve for hydraulic drive - MP-MR-ST - C02084**

No.	Art.-No.	No.	designation
1	155,000,020	1	holder for control valve
2	936,201,000	1	control valve
3	937 300 075	1	sealing kit for control cartridge
4	901 006 045	2	hexagon screw with shaft
5	901 008 020	2	hexagon screw without shaft
6	905,106,000	4	U-disk
7	905,108,000	2	U-disk
8	905 008 000	2	spring ring
9	900 006 002	2	lock nut
10	900 008 001	2	Skt.-Mutter
11	931 071 238	2	hydraulic screw connection
12	931 041 200	1	hydraulic screw connection
13	931 071 212	2	hydraulic screw connection
14	931 171 038	1	hydraulic screw connection
15	upon request	2	hydraulic connector
16		2	dust cap
17		2	hydraulic hose
18	930 000 092	1	hydraulic hose
19	930 000 093	1	hydraulic hose

4.3 Dirt collection container





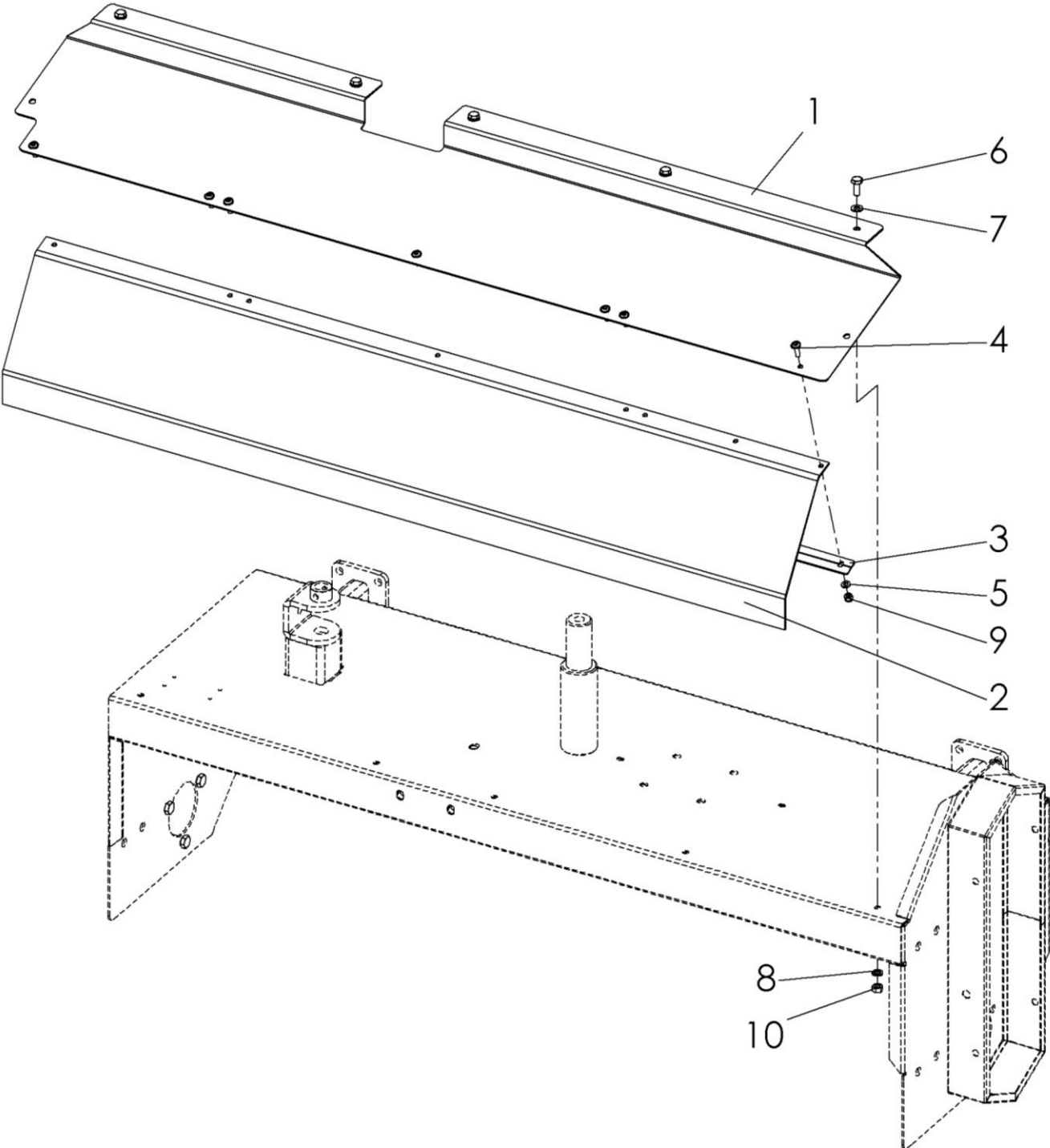
#### 4.3.1 Dirt collection container - SSB 12540 - C02145

No.	Art.-No.	No.	designation
1	C01853	1	collection container complete
2	C00911	1	Side panel right complete
3	C00952	1	Side panel left complete
4	125,000,645	1	angle rail
5	125,000,630	1	rubber splash flaps
6	C00171	2	bolt with ring
7	907,106,000	2	linch pin
8	902 642 013	5	self-tapping screw
9	901 012 025	8	hexagon screw without shaft
10	905,112,000	16	U-disk
11	900 012 002	8	lock nut
12	901 008 020	2	hexagon screw without shaft
13	905,108,000	4	U-disk
14	900 008 002	2	lock nut

#### 4.3.2 Dirt collection container - SSB 15040 - C02146

No.	Art.-No.	No.	designation
1	C01854	1	collection container complete
2	C00911	1	Side panel right complete
3	C00952	1	Side panel left complete
4	150,000,030	1	angle rail
5	150,000,630	1	rubber splash flaps
6	C00171	2	bolt with ring
7	907,106,000	2	linch pin
8	902 642 013	5	self-tapping screw
9	901 012 025	8	hexagon screw without shaft
10	905,112,000	16	U-disk
11	900 012 002	8	lock nut
12	901 008 020	2	hexagon screw without shaft
13	905,108,000	4	U-disk
14	900 008 002	2	lock nut

4.4 Splash guard cover



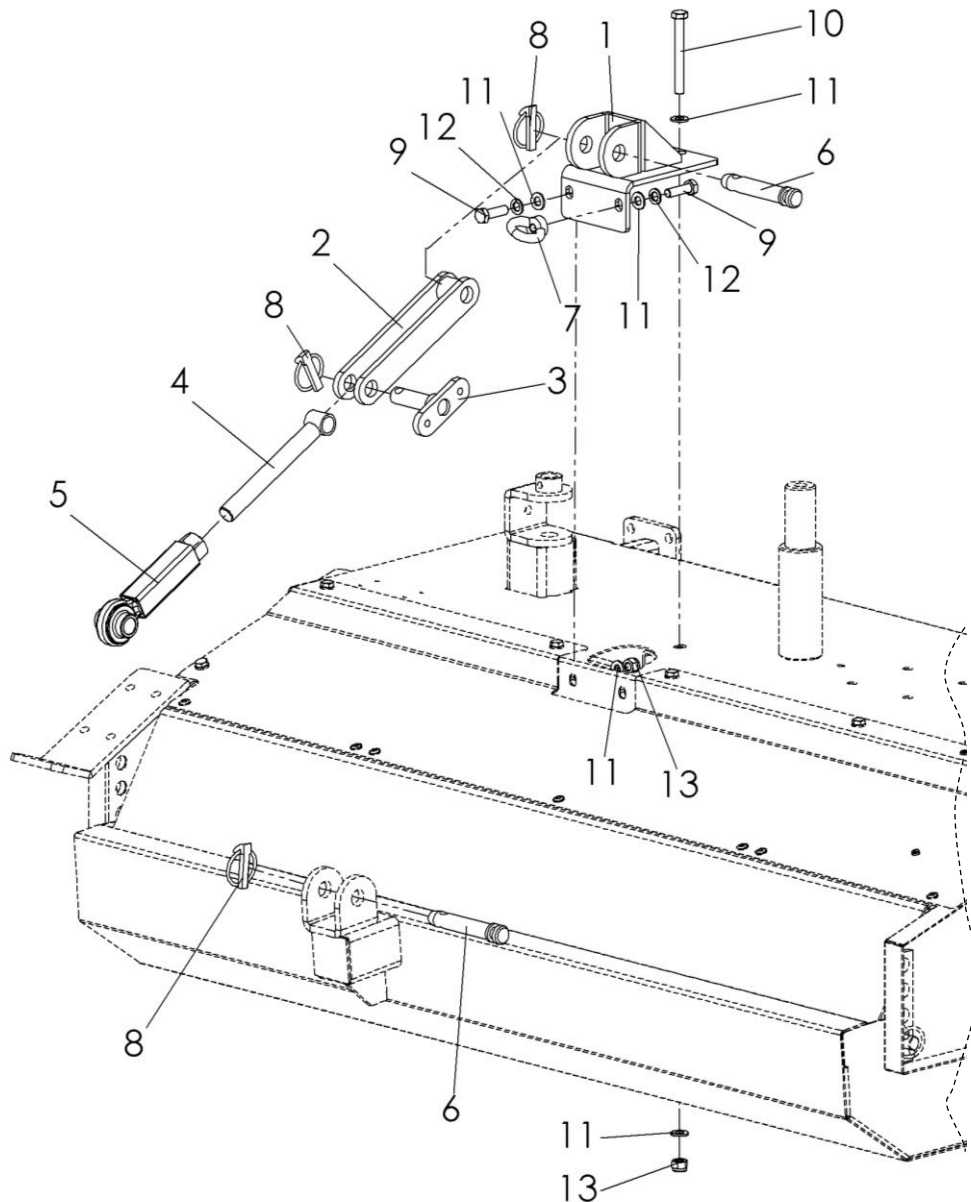
#### 4.4.1 Splash guard cover – SPA 125 - C03300

No.	Art.-No.	No.	designation
1	C01850	1	splash guard
2	127,000,585	1	rubber splash flaps
3	125,000,590	1	support rail
4	903 906 020	7	Lens head screw with hexagon socket
5	905,106,000	7	U-disk
6	901 008 020	5	hexagon screw without shaft
7	905,108,000	5	U-disk
8	905 008 000	5	spring ring
9	900 006 002	7	lock nut
10	900 008 001	5	Skt.-Mutter

#### 4.4.2 Splash guard cover – SPA 150 - C03301

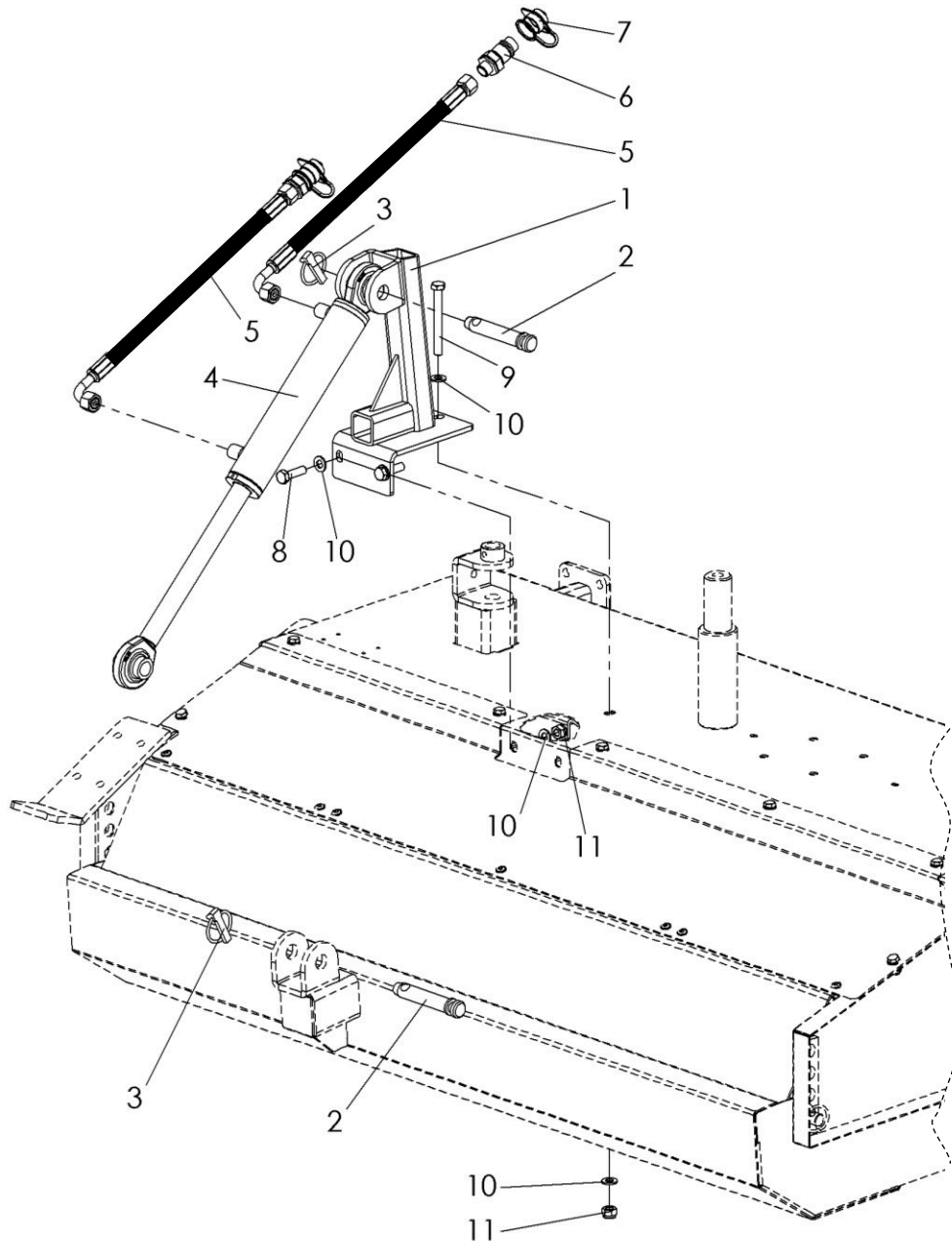
No.	Art.-No.	No.	designation
1	C01849	1	splash guard
2	150 000 590	1	retaining rail for splash guard
3	150,000,585	1	rubber splash flaps
4	903 906 020	7	Lens head screw with hexagon socket
5	901 008 020	5	hexagon screw without shaft
6	905,106,000	5	U-disk
7	905,108,000	5	U-disk
8	905 008 000	5	spring ring
9	900 006 002	7	lock nut
10	900 008 001	5	Skt.-Mutter

4.5 Mechanical dirt container emptying - C02115



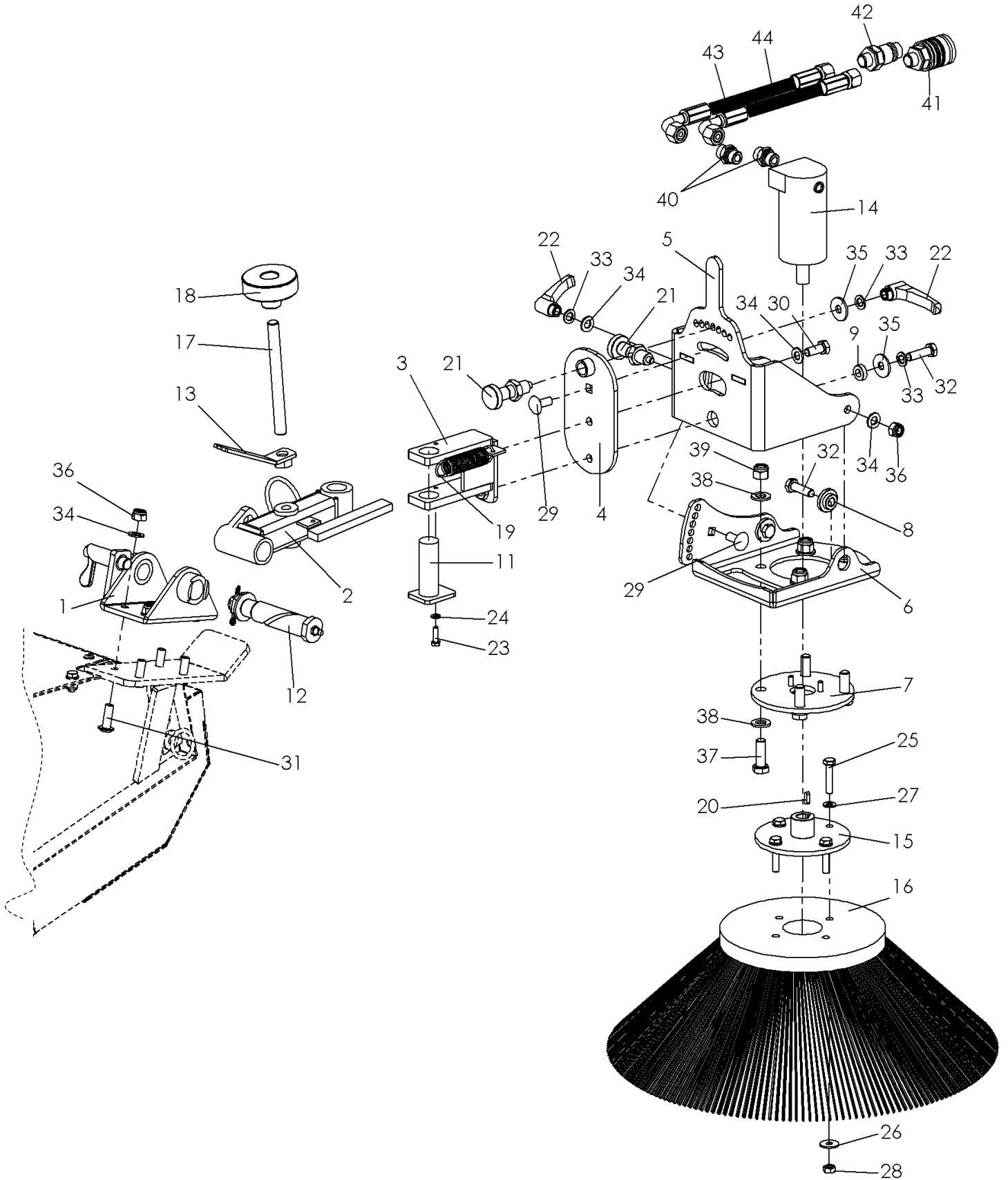
No.	Art.-No.	No.	Designation 1
1	C02030	1	holder for mechanical emptying
2	150,000,006	1	Holder spindle mechanical emptying, complete
3	150,000,005	1	Rope holder mechanical emptying, complete
4	150,000,008	1	Spindle mechanical emptying, complete
5	150,000,009	1	spindle sleeve mechanical emptying
6	907 400 073	2	socket pin
7	900 010 017	1	ring nut
8	907,111,000	3	linch pin
9	901 010 035	2	hexagon screw without shaft
10	901 110 090	1	hexagon screw with shaft
11	905,110,000	5	U-disk
12	905,010,000	2	spring ring
13	900 010 002	2	lock nut

4.6 Hydraulic dirt container emptying - HB-SSB-HFKM - C02088



No.	Art.-No.	No.	Designation 1
1	C00834	1	Cylinder mount, complete
2	907 400 073	2	socket pin
3	907,111,000	2	linch pin
4	933 101 180	1	hydraulic cylinders
5	upon request	2	hydraulic hose
6		2	hydraulic connector
7		2	dust cap
8	901 010 035	2	hexagon screw without shaft
9	901 110 090	1	hexagon screw with shaft
10	905,110,000	6	U-disk
11	900 010 002	3	lock nut

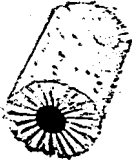


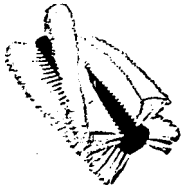
4.7 Side brush - ASH 5040 H - C02165



## side brush - ASH 5040 H - C02165

No.	Art.-No.	No.	Designation 1
1	C00829	1	Holder for side brush arm, complete
2	130,000,760	1	Middle part right, complete
3	C11719	1	front arm SB holder right compl.
4	C07259	1	Front plate complete
5	C07261	1	Plate swivel plate complete
6	C07253	1	engine mount
7	C11723	1	adapter plate hydraulic motor
8	C06167	2	flange bushing
9	C10861	1	socket
11	155,000,026	1	Arm holder, complete
12	903 220 015	1	spring bolt
13	155,000,027	1	Rotary lever for spindle, complete
14	935 111 040	1	hydraulic motor with side connection
15	155,000,025	1	side brush holder; complete
16	105,750,500	1	side brush hard
17	700 014 155	1	threaded rod
18	941 070 014	1	cord handle with thread
19	909 200 155	1	tension spring
20	908 005 516	1	feather key
21	907 501 108	2	locking bolt
22	941 200 210	2	clamping lever
23	901 006 020	4	hexagon screw without shaft
24	905,006,000	4	spring ring
25	901 008 040	4	hexagon screw without shaft
26	905 208 025	4	K-disk
27	905,108,000	4	U-disk
28	900 008 001	4	Skt.-Mutter
29	901 910 025	2	carriage bolt
30	901 010 025	1	hexagon screw without shaft
31	903 910 030	4	Lens head screw with hexagon socket
32	901 010 035	3	hexagon screw without shaft
33	905,010,000	3	spring ring
34	905,110,000	10	U-disk
35	905,210,000	2	K-disk
36	900 010 002	6	lock nut
37	901 012 035	4	hexagon screw without shaft
38	905,112,000	8	U-disk
39	900 012 002	4	lock nut
40	931 071 238	2	hydraulic screw connection
41	upon request	1	hydraulic sleeve
42		1	hydraulic connector
43		1	hydraulic hose
44		1	hydraulic hose

**5 sweeping rollers 40 cm roller diameter**

	<b>125 cm working width</b>	<b>150 cm working width</b>
Dirt sweeper with <b>Poly-Voll</b> -stocking 	125 116 040	150 116 040
dirt sweeper <b>poly-corrugated wire</b> -stocking 	125 116 540	150 116 540
Combi sweeper roller with 5-row <b>poly-twist</b> stocking 	125 110 040	150 110 040
Snow sweeper with 4-row <b>poly-twist</b> -stocking 	125 108 040	150 108 040